



lcius.com

[About Us](#)

[Lifecare Management](#)

[Guardianship](#)

[Property Solutions](#)

[Companions](#)

[Life Care Plans](#)

[Litigation Support](#)

[Education](#)

[Contact Us](#)

[LinkedIn](#)

[Facebook](#)

[Twitter](#)

Mark Your Calendars

Date: 9/18/18

Topic: Substance and the Senior: Recognizing and Curbing Dependence on Alcohol and Drugs

Sponsor: [Bria Health Services](#)

Location/Time: Bria Health Services, 10400 S. Roberts Rd., Palos Hills, IL / 5:30-7:00 PM

Contact/Registration: email contactus@lcius.com

Date: 9/20/18

Topic: Consulting and Litigation Support: Opportunities for Practice Expansion

Sponsor: [International Association of Rehabilitation Professionals](#)

Location/Time: Northern Illinois University Outreach Center, 1120 E. Diehl Rd., Naperville, IL / TBD

Contact/Registration: email contactus@lcius.com

Date: 9/20/18

Topic: Too Many Cooks in the Kitchen: When the Patient and Decision Maker are Two Different People

Sponsor: [International Association of Rehabilitation Professionals](#)

Location/Time: Northern Illinois University Outreach Center, 1120 E. Diehl Rd., Naperville, IL / TBD

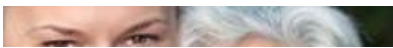
Contact/Registration: email contactus@lcius.com

©Lifecare Innovations, Inc

The Evolving Lives of Seniors: Facts, Figures and Forecasts

The University of South Carolina Masters of Gerontology program recently developed an infographic detailing the findings in a United Nations report on elderly life. **Not only are Americans living longer, but they are increasingly using computers and paying for care.**

Here are some of the key findings:





- In 1950, only 8 percent of Americans were aged 65 or older. By 2050, that percentage is expected to climb to 20%.
- Generally speaking, babies born in 1900 did not live beyond the age of 50. One out of 10 girls born in 2018 will live beyond the age of 100, and one in 20 boys will achieve the same feat.
- American women who are currently 65 can expect to live until age 86.6. Men of the same age can expect to live until age 84.3. Women who reached the age of 65 in 2015 had a one-in-three chance of making it to their 90th birthdays. Fifty years ago, the chance was just one in four. [Continue Reading](#)



Estate Planning Reduces Family Squabbles After Death

Ben Neiburger, J.D., CPA

Ben Neiburger is the founder of [Generation Law](#) in Elmhurst. He is an active member of the National Academy of Elder Law Attorneys (NAELA) and a member of the board of directors for the Illinois Institute of Continuing Legal Education. Ben's practice encompasses estate planning, elder law, probate, guardianship, real estate, among other specialties, and it is with his gracious permission that we share this article.

No two families are alike. They are unique in their dynamics, sometimes in good ways, other times, less so.

Long dormant family issues can quickly come back in heartbreaking ways in the wake of the loss of a loved one. Petty jealousies, born in childhood and nursed through adulthood, bubble to the surface when fueled by grief.

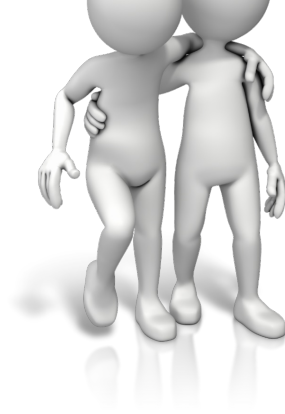
[Continue Reading](#)

Side Effects: A Story of Dementia, Isolation and Medical Calamity

Shay Jacobson, RN, MA, NMG, LNCC, CNLCP

Martha Kern





Esther was of the opinion that "you get what you expect", from a medical perspective, and she did not expect to get sick.

The day we initially met her, she explained that she could "self-heal" and only occasionally took an herbal supplement to make her body stronger.

A few minutes later, she explained that she had a ruptured cyst on her chest. She said it bled on her sheets at night. She showed it to us, and it looked far more ominous than a cyst.

Esther eventually agreed that day to have a doctor look at it and we took her to the emergency department. There, we learned that it was far more ominous, indeed. [Continue Reading](#)

©Lifecare Innovations, Inc

Sincerely,

Martha Kern, Chief Marketing Officer

Corporate Office
8330 S. Madison St.
Suite 90
Burr Ridge, IL 60527

North Shore Office
100 S. Saunders Rd.
Suite 150
Lake Forest, IL 60045

Milwaukee Office
250 E. Wisconsin Ave.
Suite 1800
Milwaukee, WI 53202



www.lcius.com
contactus@lcius.com