



[lcius.com](http://lcius.com)

[About Us](#)

[Lifecare Management](#)

[Guardianship](#)

[Property Solutions](#)

[Life Care Plans](#)

[Litigation Support](#)

[Education](#)

[Contact Us](#)

[LinkedIn](#)

[Facebook](#)

[Twitter](#)

## Mark Your Calendars

**Date:** 6/19/18

**Topic:** The Senior Experience: What We Think it is, What it *Really* is, and How We Can Make it Better

**Sponsor:** [Belmont Village Oak Park](#)

**Location/Time:** River Forest Medical Campus, 420 William St., Building A, Community Room 1100, River Forest, IL / 11:30-12:30 AM

**Contact/Registration:** email [contactus@lcius.com](mailto:contactus@lcius.com)

**Date:** 6/21/18

**Topic:** Alone and Impaired: Collaborative Strategies for Safe Discharge of Cognitively Impaired Elder Orphans

**Sponsor:** [Case Management Society of America](#) 2018 Annual Conference & Expo

**Location/Time:** McCormick Place, 2301 S. King Dr., Chicago, IL / 10:10-11:40 AM

**Contact/Registration:** [Click here for registration information](#)

**Date:** 7/19/18

**Topic:** Senior Care in 2030: What Trends and Demographics Tell Us About the Future

**Sponsor:** [Belmont Village Oak Park](#)

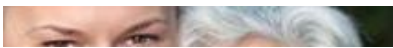
**Location/Time:** Belmont Village, 1035 Madison St., Oak Park, IL / 8:30-10:00 AM

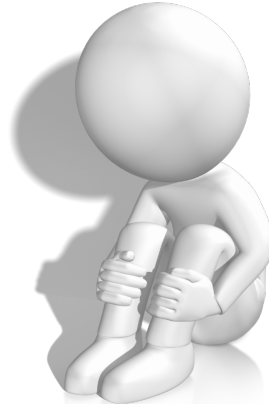
**Contact/Registration:** email [contactus@lcius.com](mailto:contactus@lcius.com)

©Lifecare Innovations, Inc

## Transitional Trauma: Senior Stress in Response to a Move

Jennifer Axelson, LCSW, CCM, MSCC, CLCP  
Martha Kern





The experience of trauma before, during and after a relocation is so widespread that there are official names for the phenomenon: Transfer Trauma and Relocation Stress Syndrome. The condition is a variation on adjustment disorder and can be very difficult to endure.

While symptoms of transitional trauma can appear in people of any age undergoing change, particularly when it's abrupt and unwanted, it is seen most acutely in seniors.

Changes in mood, behavior and physical health can emerge up to three months after a move and are sometimes mistaken for delirium or dementia.

[Continue Reading](#)

©Lifecare Innovations, Inc

## Fiduciary Investing: Seek Prudence, Not Performance

**William Hardesty, J.D.**

*William Hardesty, J.D. is Managing Director and Senior Trust Officer at Arboretum Wealth & Trust Management, an organization he helped launch. It is with the author's gracious permission, along with that of the DCBA, that we share this insightful article, originally published in the February 2018 edition of the DCBA Brief.*

The DuPage County Bar Association grants permission to reprint all or part of the article entitled, "**Fiduciary Investing: Seek Prudence, Not Performance**" by **William Hardesty**, Volume 30, Issue 7, February 2018 edition of the *DCBA Brief* magazine, with appropriate attribution to the author and *DCBA Brief*. Copyright 2018, *DCBA Brief*, All Rights Reserved.

There is a significant volume of statistical data proving that no investor can consistently beat (out-perform) the returns of the stock market,<sup>1</sup> yet, individual investors and fiduciaries with investment responsibility continue to invest, or are advised to invest, in high-cost, actively managed mutual funds.<sup>2</sup> Often, those buying managed funds, directly or through a broker, unnecessarily and unknowingly pay fees and expenses that benefit the person who sold the fund. When brokers and other financial intermediaries, including corporate fiduciaries, benefit financially from using high-cost managed mutual funds, and fiduciaries commonly use those funds on behalf of beneficiaries, The U.S. Department of Labor, courts, and statistics say that a conflict exists and beneficiaries do not get what they are



paying for.<sup>3</sup> If prudence truly guides fiduciary investment decisions, these issues must be addressed honestly and the warnings of the experts must be heeded. [Continue Reading](#)

## Anatomy of a Hospital Readmission: A Perfect Storm of Age, Isolation and Multiple System Failures

Shay Jacobson, RN, MA, NMG, LNCC, CNLCP  
Martha Kern



We found Bob on the floor of his apartment, unable to get up or call for help.

His home was infested with mice, so the floor was a most unpleasant place to be.

We called 911, of course, so Bob would be brought back to the hospital... from which he had been *discharged twice in the preceding 30 days*.

A hospital and four community-based service providers had been key players in Bob's drama, but Bob wound up helpless on a floor sprinkled with rodent droppings nonetheless. [Continue Reading](#)

©Lifecare Innovations, Inc

Sincerely,

Martha Kern, Chief Marketing Officer

**Corporate Office**  
8330 S. Madison St.  
Suite 90  
Burr Ridge, IL 60527

**North Shore Office**  
100 S. Saunders Rd.  
Suite 150  
Lake Forest, IL 60045

**Milwaukee Office**  
250 E. Wisconsin Ave.  
Suite 1800  
Milwaukee, WI 53202



[www.lcius.com](http://www.lcius.com)  
[contactus@lcius.com](mailto:contactus@lcius.com)