



# Lifecare

## INNOVATIONS

[lcius.com](http://lcius.com)

[About Us](#)

[Lifecare Management](#)

[Guardianship](#)

[Property Solutions](#)

[Companions](#)

[Life Care Plans](#)

[Litigation Support](#)

[Education](#)

[Contact Us](#)

[LinkedIn](#)

[Facebook](#)

[Twitter](#)

## Mark Your Calendars

**Date:** 9/18/18

**Topic:** Substance and the Senior: Recognizing and Curbing Dependence on Alcohol and Drugs

**Sponsor:** [Bria Health Services](#)

**Location/Time:** Bria Health Services, 10400 S. Roberts Rd., Palos Hills, IL / 5:30-7:00 PM

**Contact/Registration:** email [contactus@lcius.com](mailto:contactus@lcius.com)

**Date:** 9/20/18

**Topic:** Consulting and Litigation Support: Opportunities for Practice Expansion

**Sponsor:** [International Association of Rehabilitation Professionals](#)

**Location/Time:** Northern Illinois University Outreach Center, 1120 E. Diehl Rd., Naperville, IL / TBD

**Contact/Registration:** email [contactus@lcius.com](mailto:contactus@lcius.com)

**Date:** 9/20/18

**Topic:** Too Many Cooks in the Kitchen: When the Patient and Decision Maker are Two Different People

**Sponsor:** [International Association of Rehabilitation Professionals](#)

**Location/Time:** Northern Illinois University Outreach Center, 1120 E. Diehl Rd., Naperville, IL / TBD

**Contact/Registration:** email [contactus@lcius.com](mailto:contactus@lcius.com)

**Date:** 10/4/18

**Topic:** Fear of Falling: New Frontiers in Senior Fall Prevention

**Sponsor:** [Villa St. Benedict](#)

**Location/Time:** Villa St. Benedict, 5450 Subiaco Dr., Lisle, IL / 5:00-6:30 PM

**Contact/Registration:** email [contactus@lcius.com](mailto:contactus@lcius.com)

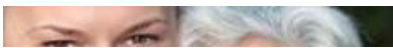
**Date:** 10/8/18

**Topic:** Ethical Obligations When Representing Fiduciaries

**Sponsor:** [IICLE Elder Law Short Course](#)

**Location/Time:** Hilton Lisle/Naperville, 3003 Corporate W. Dr., Lisle, IL / 3:50-4:50 PM

**Contact/Registration:** [Registration Information](#)





**Date:** 10/9/18

**Topic:** Elder Orphans: Care and Legal Issues Surrounding Seniors Without Family

**Sponsor:** [IICLE Elder Law Short Course](#)

**Location/Time:** Hilton Lisle/Naperville, 3003 Corporate W. Dr., Lisle, IL / 1:30-2:30 PM

**Contact/Registration:** [Registration Information](#)

©Lifecare Innovations, Inc

## Fear of Falling: New Frontiers in Senior Fall Prevention

**Martha Kern**

**Lauren Sherman, LCSW, CCM, NMG**



Falling and its many consequences are hardly new to the senior age group. There are a host of reasons seniors fall, some of which can be mitigated, and there are several new technologies that may help make this phenomenon less damaging.

Medicare and Medicaid certainly have an interest in the matter. These two entities bear 75% of the costs incurred when seniors fall and injure themselves, which they do at alarming rates - 800,000 patients are hospitalized each year for fall-related injuries, and three million visit the emergency department for the same reason. Total medical costs in 2015 associated with falls was \$50 billion.

Falls account for 95% of hip fractures and are the most common cause of traumatic brain injury. Sadly, 9500 people die each year from causes related to a fall. [Continue Reading](#)

©Lifecare Innovations, Inc

## LCI Adds New Continuing Education Topics

New topics have been added to LCI's already well-rounded menu of presentations, and we're booking fall events now. We can provide education to your staff, your referral sources and your prospects. Each presentation offers an hour of content and one CEU credit for licensed nurses, social



offers an hour of content and one CEU credit for licensed nurses, social workers and nursing home administrators. Presentations can be modified to make them more consumer friendly when an event is planned for the community.

As always, LCI will bring all the necessary A/V equipment and CEU paperwork.

**CEU and community presentations are free of charge for both hosting venues and participants.**

[Click here to view our updated list of topics](#)

[Click here to schedule a presentation](#)

©Lifecare Innovations, Inc

## **The Special Offender: When Psychiatric Issues Undermine Judgment and Lead to Crime**

**Jennifer Axelson, LCSW, CCM, MSCC, CLCP**

**Martha Kern**



Matthew's psychiatric history was infinitely more complex than his criminal history.

Six diagnoses - Schizoid Personality Disorder, Attention Deficit Hyperactivity Disorder, Tourette Syndrome, Asperger's, Oppositional Defiant Disorder and Obsessive Compulsive Disorder - had made a young life of just 26 years incredibly difficult.

Matthew's criminal history was far simpler: There had been no trouble at all. His record was perfectly clean until poor social insight and a broken heart changed everything. [Continue Reading](#)

©Lifecare Innovations, Inc

Sincerely,

Martha Kern, Chief Marketing Officer

**Corporate Office**  
8330 S. Madison St.  
Suite 200

**North Shore Office**  
100 S. Saunders Rd.  
Suite 150

**Milwaukee Office**  
250 E. Wisconsin Ave.  
Suite 1800



Suite 90  
Burr Ridge, IL 60527

Suite 150  
Lake Forest, IL 60045

Suite 1800  
Milwaukee, WI 53202



[www.lcius.com](http://www.lcius.com)

[contactus@lcius.com](mailto:contactus@lcius.com)